



Women's Peace &
Humanitarian Fund

A United Nations & Civil Society Partnership

LEBANON

20
22



Women's Peace & Humanitarian Fund

In Lebanon

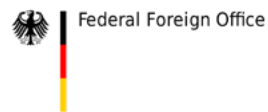
The United Nations Women's Peace and Humanitarian Fund (WPHF) is a global partnership re-energizing action and accelerating support for women's participation, leadership, and empowerment in humanitarian response and peace and security settings. WPHF is a multi-partner trust fund mobilizing urgently needed financing for local organizations led by and working alongside women on the front lines to build lasting peace.

In Lebanon, the WPHF focuses on independent and newly emerging civil society organization targeting women and girls who face multiple and intersecting forms of discrimination – those organization that specifically suffering from lack of funding and exclusion in decision making processes.

Our partners



Generously supported by



Contents

| | |
|--|----|
| KEY HIGHLIGHTS IN 2022 | 1 |
| PHASE I: PARTNER SPOTLIGHTS | |
| Auberge Beity | 3 |
| Dar Al Amal | 7 |
| Fe-Male | 9 |
| Haven for Artists | 13 |
| Madanyat & ONDES | 15 |
| SEEDS | 17 |
| PHASE II: NEW PARTNERS & THE WAY FORWARD | 19 |

Key highlights

In 2022

Over 2,000
women directly
reached

Four
new reports
& publications

Over 20
National & international
stakeholders engaged in
the WPHF response

Nine
New WPHF
Partners

200+
Solar lamps
installed in over
60 locations

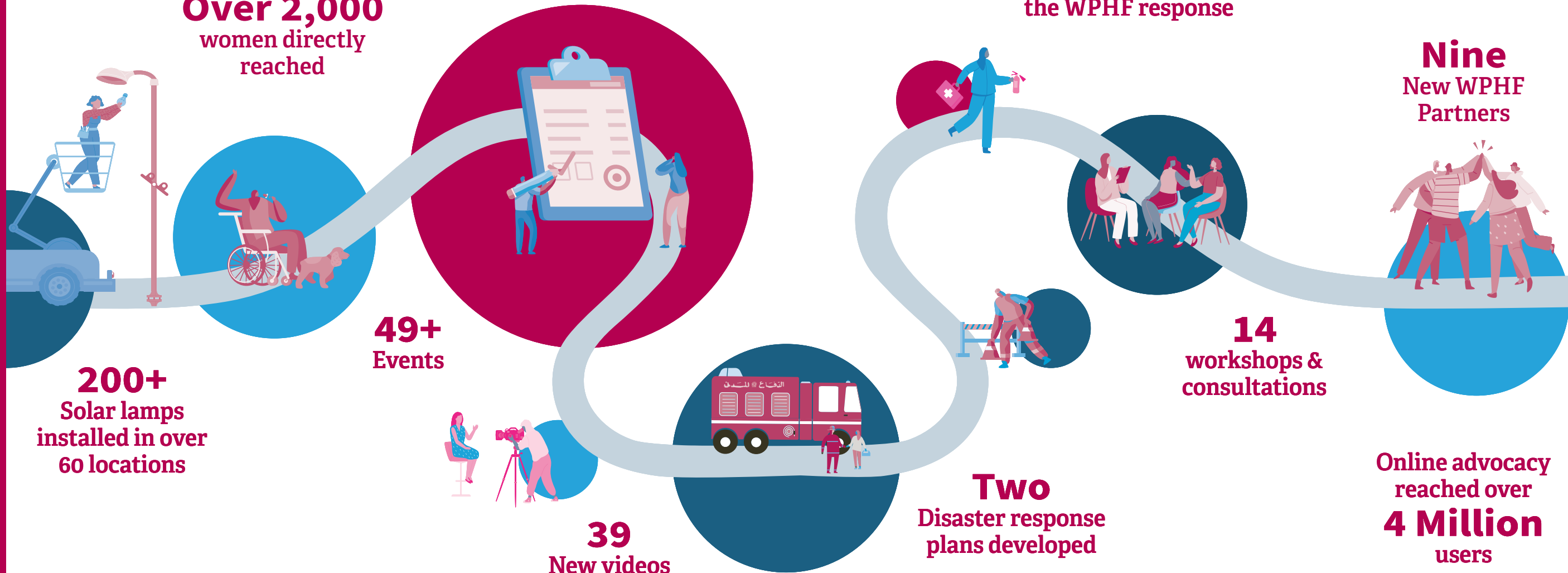
49+
Events

14
workshops &
consultations

Online advocacy
reached over
4 Million
users

39
New videos

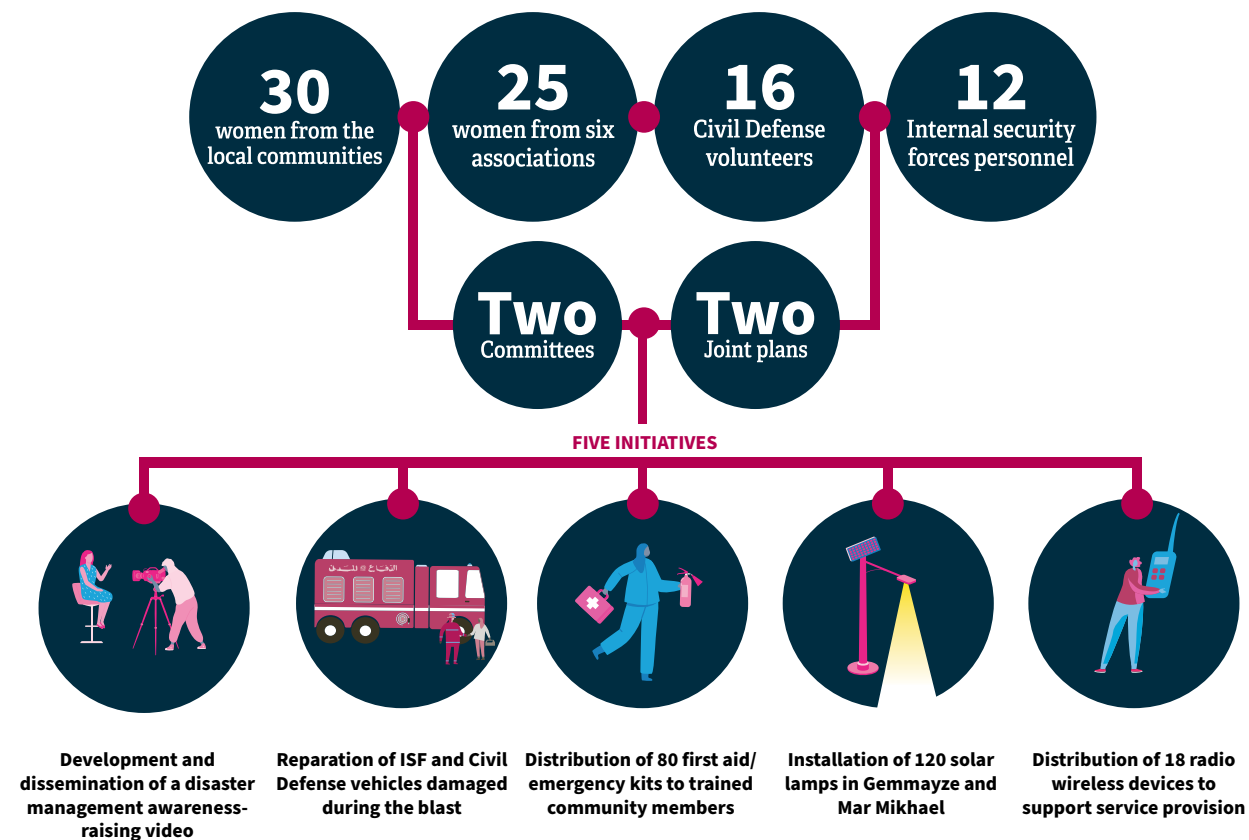
Two
Disaster response
plans developed



Auberge Beity

And in Unity, Strength Exists

In 2022, Auberge Beity Association led a series of activities to provide a platform for exchange and collaboration with the women and CSO representatives trained during the first phase of the project in 2021, together with personnel from the Civil Defense and the Internal Security/Police Forces (ISF). The joint platform led to the establishment of two committees, where they proceeded with the development of two joint plans and the roll out of a series of initiatives under the plans.



PROJECT HIGHLIGHTS

88 women
directly reached
& **20 men**
directly reached

Over one million
people engaged on
social media

Both service providers
successfully integrated
gender-responsive disaster
management into their
services

WATCH BACK ON THE
AUBERGE BEITY JOURNEY



Auberge Beity closing event in July 2022. Photos: UN Women/Lauren Rooney

Auberge Beity

Stories & Voices

Meet Youssef Rafiq Mallah, Head of the Beirut Regional Center Civil Defense Operations Unit.

Youssef has enrolled his Civil Defense team of eight women and four men to advance gender-responsive disaster management planning in cooperation with civil society members under the UN Women 'Participation in Disaster Management Accountability' Project led in partnership with the local NGO Auberge Beity.

"Women make up half of our society, having their voices heard in disaster response planning is vital."



READ HERE



Meet Major Fadi Touma, Commander of the Gemmayze Police station

Committed to being better prepared for disasters in future, Major Fadi Touma and his platoon participated in the 'Disaster Management Accountability' project, which brought together ISF members and women affected by the Beirut Blast to develop disaster management improvement plans.

"Community policing encourages community members to engage with security work, so they feel more engaged in the safety of their neighborhood."



READ HERE

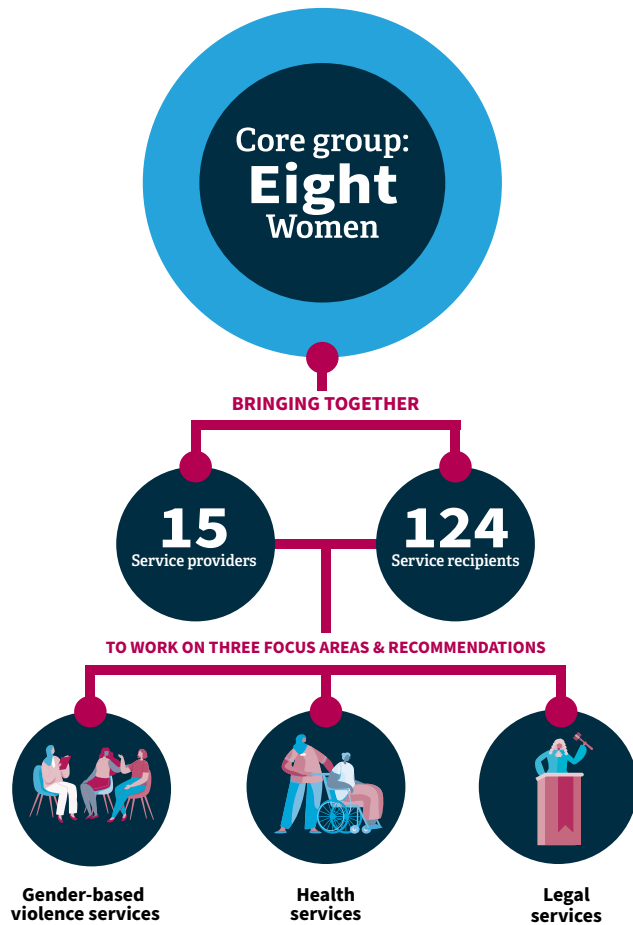


Dar Al Amal

With Them, and For Them

In 2022, Dar Al Amal continued to create safe spaces for women to acknowledge the service needs in their communities by empowering a core group of eight women to advocate for women's better access to services and enhanced participation in decision-making.

The core group undertook a series of trainings to support them in establishing a mechanism for collaboration and dialogue amongst service providers and service recipients in Sin El Fil and Bourj Hammoud/Nabaa areas.



PROJECT HIGHLIGHTS

132
women influenced
better access to services,
including:

1. Gender-based violence services
2. Health services
3. Legal services

180,000
people indirectly benefitted
from the response



“She Knows Better, is the slogan of this project. It holds the fundamentals of community work because it starts with the needs of the marginalized population, acknowledges their capabilities, knowledge, skills and builds the interventions with them and for them.”

- Hiba Abou Chakra, Dar Al Amal Project Coordinator.



“For the first time, I was at the same table with the stakeholders in the area to make change on the ground.”

- Khadije Jaber,
core group member.

One report
highlighting the gender-
responsive service needs and
recommendations in the
targeted communities

VIEW THE FULL
GENDER-RESPONSIVE
SERVICE NEEDS REPORT



WATCH BACK ON THE
DAR AL AMAL JOURNEY



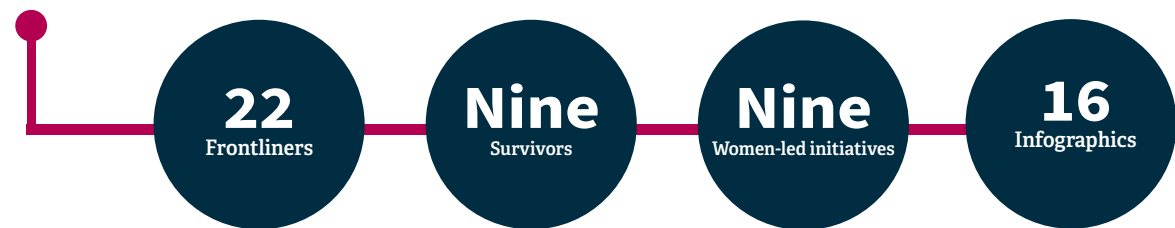
Fe-Male

Response & Coverage

In 2022, Fe-Male conducted a Gender Media Audit which consulted 20 organizations to identify and analyse the strengths, good practices, weaknesses, gaps, and challenges in the institutional mechanisms and processes for gender mainstreaming in Lebanese media.



Following the Audit, Fe-Male sought to redefine the media stories shared during the Beirut Blast through a digital media campaign that amplified women's voices and included a series of infographics on the rights and needs of women and marginalised groups affected by the Beirut blast.



- 51%** of the affected population's households comprise female-headed households.
- 8%** of elderly women living alone.
- 51%** of female business owners affected by Beirut explosion said they could not reopen without receiving assistance.
- WOMEN AND MARGINALIZED GROUPS** continue to have an urgent need to access health services – especially first aid. At the same time, discriminatory practices and fear of harassment or abuse are deterring some women from receiving equitable humanitarian assistance.
- Women** played an important role in the official and non-official humanitarian response to the Blast. Still, some spoke about the discrimination and harassment women responders faced in this domain. Some women did not feel safe in the affected areas of the blast.
- The aid provided after BEIRUT EXPLOSION did not take into consideration the access challenges for **women, the elderly, people with disabilities, the LGBTQ+ community, migrants, and refugees**.
- FEMALE HEADED HOUSEHOLDS (58%)** were more likely than male headed households (**42%**) to report that at least one member of their household has a physical and/or mental disability.
- From 1992 until 2020, the average level of aid specifically allocated to women and girls ranged from 0.1% to 8.39%.**
- 50%** of Beirut hospitals out of service, access to health care and sexual and reproductive health services for women and girls is jeopardized.
- 54%** of female business owners affected by Beirut explosion stated a need for support in rebuilding the physical infrastructure of the businesses and **36%** requested financial support to rebuild and/or replace lost or damaged stock.
- The explosion of the Beirut port led to the displacement of about **150,000 Women** including **84,000** women and girls of childbearing age. More than a month after the devastating explosion, the lives of these women and girls have become uncertain.
- The first incoming aid to Lebanon specifically targeting women happened in 2001.
- Who are the **INDIVIDUALS and COMMUNITIES** most affected by Beirut explosion? People with disabilities, women and girls, Refugees.

CAMPAIGN HIGHLIGHTS

Social media reach

1.8 million
Reach/Impressions

1.4 million
video views

20,700
Engagements

VIEW THE FULL SET OF FE-MALE INFOGRAPHICS



Fe-Male Stories & Voices

Journalist Mirella Abou Khalil took to the street and explored the experiences and urgent needs through conducting a series of interviews with members of underrepresented communities, such as sex workers, ex-offenders, elderlies, single mothers, daughters, and members of the LGBTQ community, whose perspectives are rarely represented in mainstream media. We learn from Mirella's interviews that many women, particularly those from underrepresented groups were denied their right to justice following the August 4th explosion.



Sonia

Sonia* reflects on how the blast and the crisis in Lebanon have affected vital access to aid and resources for the trans community.

WATCH HERE



Mirna

Mirna, is one of at least 800 people suffered temporary or permanent disabilities during the blast, she shares her story.

WATCH HERE



Rim

Rim*, reflects on her experience of feeling alienated from society after serving time in prison, especially after the blast.

WATCH HERE



Women frontline workers are warriors

Hear from the women who were on the frontlines responding to the devastating Beirut explosion. Two years after the blast, these warriors are still there to serve their communities amid the complete absence of the government.

WATCH HERE



VIEW THE FULL PLAYLIST OF
FE-MALE VIDEOS

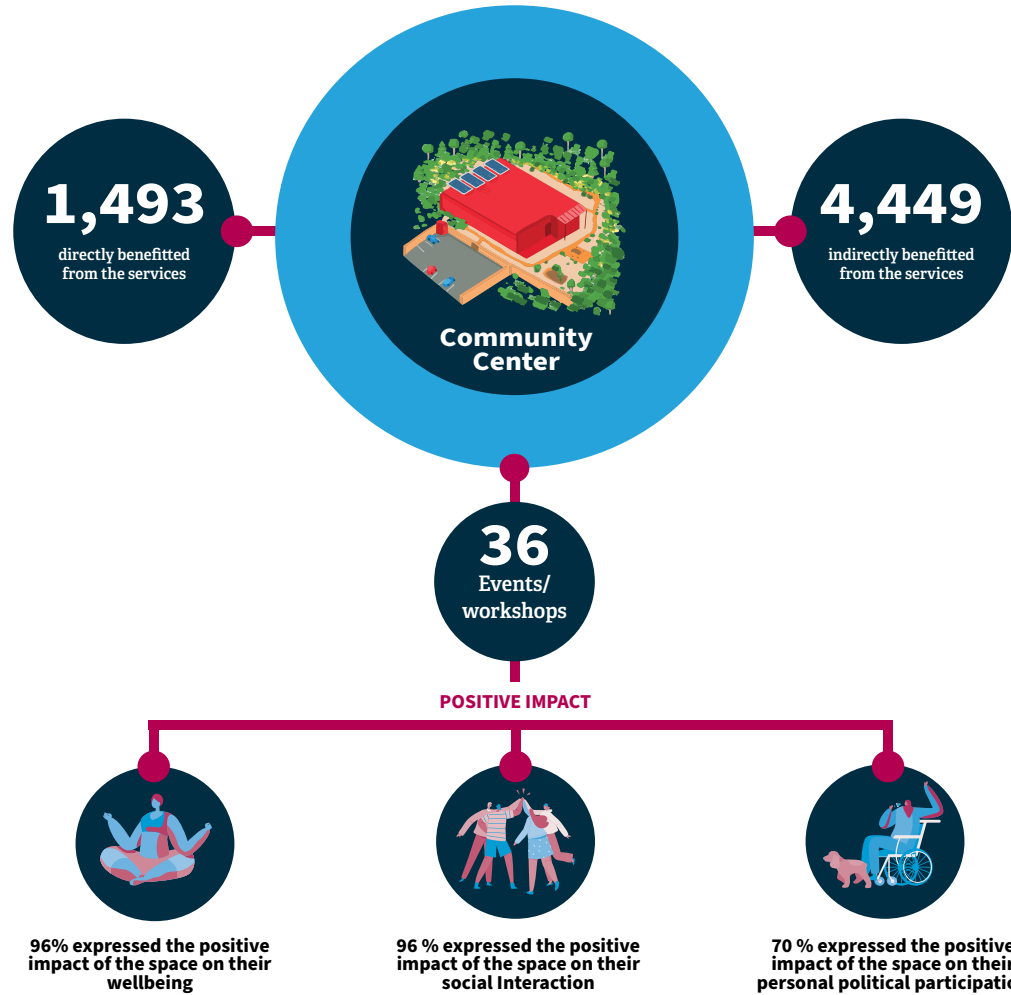


Haven For Artists

Art and Activism

In 2022, Haven For Artists opened the newly renovated Cultural Community Center, which serves as a space for women, artists, and marginalized communities to gather in a safe and functional space.

Haven For Artists has run a series of events and workshops throughout the year for community members to meet, create links, exhibit work, and exchange experiences, knowledge and skills.

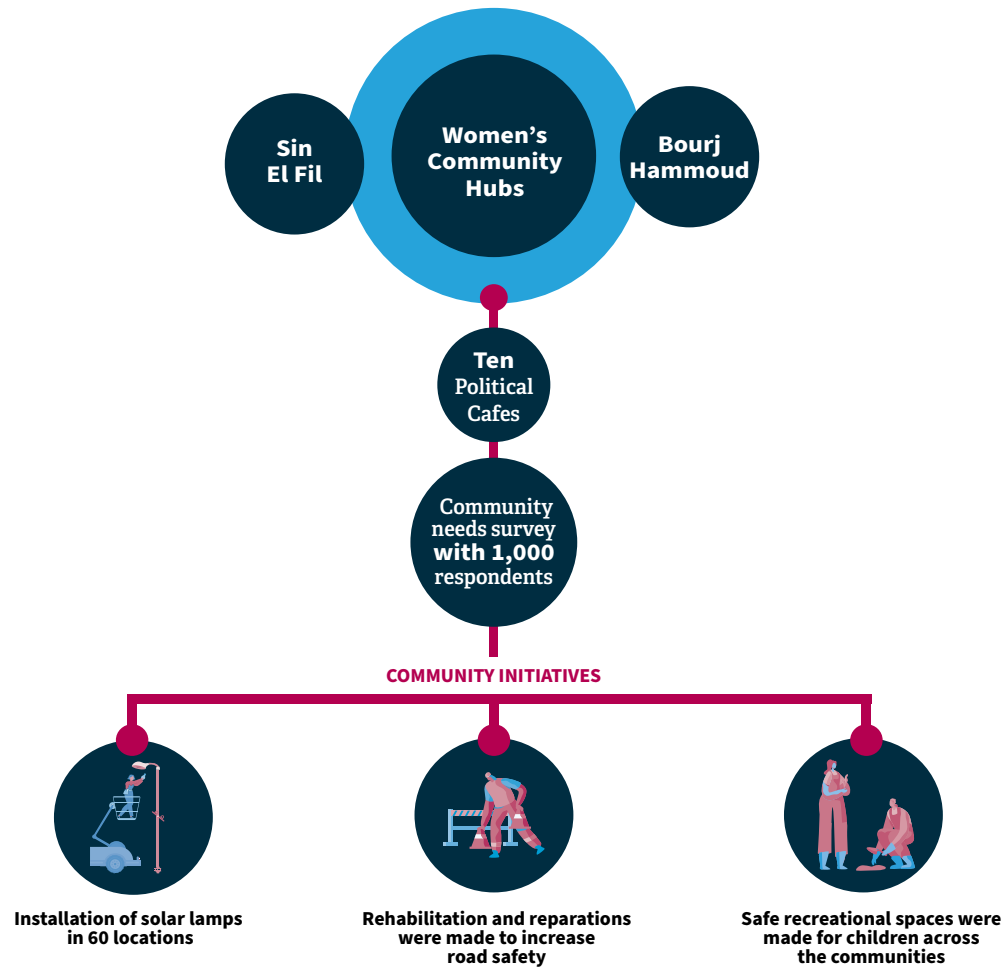


Madanyat & ONDES

A Journey of Strength and Reconciliation

In 2021, Madanyat & ONDES supported 19 women to establish two women’s committees in Sin El Fil and Bourj Hammoud. In addition, the women committee members undertook trainings in public speaking, communication and advocacy, and mobile phone photography to support them in rolling out community initiatives in 2022.

And in 2022, the two committees led a series of community initiatives to enhance women’s meaningful involvement in local decision-making and planning, and engagement in political participation.



Photos: Madanyat & ONDES

PROJECT HIGHLIGHTS

964
people directly
benefitted from the
response

450
Women increased their
representation and
Participation in local
planning and decision-
making processes

Four
issues voiced by women
through the efforts of women
committees were addressed
by local decision makers

WATCH BACK ON THE
MADANYAT & ONDES JOURNEY



Seeds for Legal Initiatives (SEEDS)

In the Shadow of a State

In 2022, SEEDS developed and launched a study on the extent to which recovery programs that received funding following the Beirut Blast succeeded in promoting the participation of women in decision-making processes; considering the specific needs of women and girls including minority groups; adopting the recommendations of the Feminist Charter of Demands; and taking into account the goals of the Lebanon Reform, Recovery and Reconstruction Framework (3RF).



The image shows the cover of a report titled "In the Shadow of a State: Towards More Gender Responsive Aid". The cover features a stylized illustration of a city skyline with a prominent tower, set against a blue sky and a body of water. Below the illustration, there are logos for SEEDS, Women's Peace & Humanitarian Fund, and UN WOMEN. To the right of the cover, there is a dark blue box with the text "VIEW THE EXECUTIVE SUMMARY" and a QR code.

REPORT HIGHLIGHTS

Recommendations for Gender Responsive and Women Inclusive Aid



Inclusionary Recommendations

1. Eradicate Structural Discrimination
2. Fight Corruption and Advocate for Accountability at the National Level
3. Advocate for Justice at the National Level
4. Mobilize with Stakeholders to Prioritize Gender in any Recovery Effort



Programmatic Recommendations

1. Adopt Gendered Internal Policies
2. Implement Gender Sensitive Monitoring and Evaluation
3. Ensure Transparency, Access to Data and Accountability
4. Devise an Effective Coordination Plan

6,720

people Indirectly benefited from the Response

51

participants engaged during the consultation processes

Five

organizations integrated gender responsiveness in their internal policies

18

national and international partners pledged their commitment to support the report

WPHF in Lebanon The Way Forward

The Women's Peace and Humanitarian Fund (WPHF) together with the United Nations in Lebanon has launched the second window of its financial support to eight women-led organizations in Lebanon that are working on community peacebuilding in Lebanon, as part of strengthening their institutional capacity and maximizing peacebuilding results.



**VIEW THE
PRESS RELEASE**



“The WPHF has indeed lived up to the expectations and delivered impressive work in its first round. We are all proud of the seven inspiring organizations we have so far partnered with and wish the new participants success. Germany renews its trust in the fund and in the civil society organizations that have courageously stepped up in response to Lebanon’s enduring crisis.”

- H.E. Andreas Kindl, The German Ambassador to Lebanon

“Women continue to have to fight for their voices to be heard, despite abundant evidence on the link between women’s participation and peace. We need more women in decision-making and in peacebuilding efforts to ensure Lebanon’s sustained recovery.”

- Najat Rochdi, former UN Resident and Humanitarian Coordinator for Lebanon

“We owe it to those championing peace on the frontlines to provide them with timely and accessible funding that is responsive to their realities”

- Rachel Dore-Weeks, Head of UN Women in Lebanon

42

Proposals
submitted

Eight

Women-led
organizations
selected

+3

sub-partners

SELECTED ORGANIZATIONS

The WPHF second window is supporting eight additional projects led by 11 female-led grassroots organizations with the aim of improving the political participation of women and their engagement in matters of peace and security. Three will be supported under the institutional funding stream, and eight under the programmatic funding stream.

Stream 1 –Institutional Support

SEEDS

SEEDS is a women-led human rights organization, and a phase 1 WPHF grantee. Under Phase II, the organization will receive institutional funds to support it to retain key personnel, engage in strategic planning and raise new resources.

Haven for artists (H4A)

Haven for artists (H4A) is a feminist art organization working at the intersection of art and activism, and a phase 1 WPHF grantee. Institutional funding will be provided to the maintenance of Haven House and the development of a new strategic and financial long-term strategy.

Abnaa Saida El Balad

Abnaa Saida El Balad is a women-led youth organization in Saida. As a new recipient of the WPHF, funds will support the organization’s core activities and the organization to develop an adaptative strategy and a detailed plan for its gender equality program.

Stream 2 –Programmatic Support

Green villages

Green villages promotes women’s economic empowerment through ecological solutions while promoting women’s activism. The project funded by the WPHF will work in remote and border Syria, bringing together women’s groups to discuss about different issues affecting their communities, and engage with local authorities.

Women alive

Women alive works in the north of Lebanon. The project promotes peacebuilding and women’s participation and engagement. It will target female university students in clubs and the broader public through campaigns and dialogue with municipalities on topics of gender-based violence, peacebuilding, and political rights.

Lebanese Family Planning Association for Development & Family Empowerment (LFPDA)

LFPDA is a women/youth rights organization. Work funded under the WPHF seeks to increase women’s political participation at the municipal level in 15 villages in the regions of Tyre and West Bekaa.

Committee of Employee Women Union (CEWU)

CEWU is a women’s rights/led organization focused on equality issues. CEWU aims to politically empower women through skills building on promoting peace and conflict resolution in their communities, as well as public debating and mediation.

Led in partnership with Smart Center and Creadel.

SEENARYO

SEENARYO utilizes participatory theatre for the empowerment of communities, partnering with Women Now for Development. The project will target local Lebanese and refugee women living in the Bekaa, as well as community leaders from local municipalities and CSOs, with the aim of supporting the integration of women’s voices and priorities into local decision-making.

Led in partnership with Women Now for Development.





WPHF in Lebanon
**STAY TUNED
FOR 2023**

Generously supported by



Federal Foreign Office



Ministry for Foreign
Affairs of Finland

**For more information on
the WPHF in Lebanon**

